

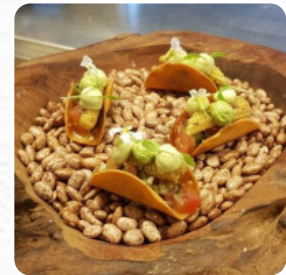


## ***Atelier Maple Menu***

<https://menulist.menu>

Karel De Preterlei 210, Borgerhout, Belgium

+3232958090 - <https://ateliermaple.be/>



On this homepage, you can find the [complete menu](#) of Atelier Maple from Borgerhout. Currently, there are 18 menus and drinks available. For **seasonal or weekly deals**, please contact the restaurant owner directly. You can also contact them through their website. What [Olivia Jacob](#) likes about Atelier Maple:

Best dinner in recent memory. No dish fell from the tone, ingredients of top quality treated with the necessary respect, and beautiful presentation. Management, often underbearing, was completely how it should be. We're definitely coming back. [read more](#). As a customer, you can use the WLAN of the place free of charge, Depending on the weather, you can also sit outside and have something. What [Soña Oliva](#) doesn't like about Atelier Maple:

The food was exquisite, real flavor bombs and pretty light to digest. The fish was perfectly baked and particularly tasteful herb. Also the meat dish was a top dish. Your menu is a real rapist, and whatever is pleasant is the alcohol-free thanks. They fit perfectly with each menu. Also the mood was mutual and the terrace is particularly cozy to encounter it. On a warm summer night of mine, your restaurant gets at lea... [read more](#). The Atelier Maple originating from Borgerhout offers various flavorful [seafood](#) courses, You can take a break at the bar with a **cool beer** or other alcoholic and non-alcoholic drinks. Not to be left out is the comprehensive selection of coffee and tea specialties in this locale, You can also look forward to the typical tasty *French cuisine*.

# *Atelier Maple Menu*



## *10 most popular*

TABBOULEH

## *Steaks*

SURF AND TURF

## *Starters*

TARTARE

## *Main Course*

CEVICHE

## *Beverages*

JUICES

## *Hot drinks*

TEA

## *Coffee*

CAFÉ

## *Drinks*

DRINKS

## *Biscuits and Cookies*

COOKIE

## *Restaurant Category*

DESSERT

## *Ingredients Used*

MEAT

CHEESE

PORK MEAT

SEAFOOD

## *These types of dishes are being served*

BREAD

FISH

PASTA

TUNA STEAK

# *Atelier Maple Menu*



## *Atelier Maple*

Karel De Preterlei 210,  
Borgerhout, Belgium

### **Opening Hours:**

Monday 00:00 -00:00  
Tuesday 19:00-20:00  
Wednesday 19:00-20:00  
Thursday 19:00-20:00  
Friday 12:00-13:00 19:00-20:00  
Saturday 19:00-20:00  
Sunday 00:00 -00:00

Made with [menulist.menu](https://menulist.menu)

 gallery image

