



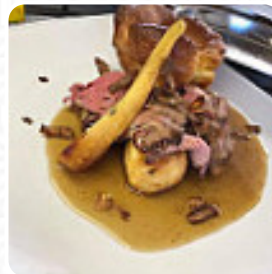
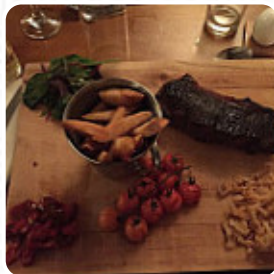
## *The Swan Menu*

<https://menulist.menu>

Church Street, Herefordshire, County of, United Kingdom

1675462212,+441544239433 -

<https://www.stonehouserestaurants.co.uk/nationalsearch/eastandwestmidlands/theswanhotelcolest>  
\_source=google&utm\_medium=organic&utm\_campaign=gmb



On this site, you can find the *complete [menu](#)* of *The Swan* from Herefordshire, County of. Currently, there are **16** menus and drinks available. For seasonal or weekly deals, please contact the restaurant owner directly. You can also contact them through their website. What [lucyCza](#) likes about The Swan:

We were staying locally in the area and was the only pub in the town that had sports on which was perfect for us. Good selection of drinks and the menu looked great. Only downside, which I know it couldn't be helped, was that we could not try the food due to their being a large event on. We did return a day later to try again for lunch as we noted from the sign outside said they served food until 2pm however we arriv... [read more](#). When the weather conditions is pleasant you can also eat and drink outside, And into the accessible rooms also come customers with wheelchairs or physical disabilities. WLAN is available at no extra cost. What [Rob O](#) doesn't like about The Swan:

Extremely disappointing pizza. The menu claims that it is 'hand made' but 'assembled with the cheapest ingredients from the cash and carry' would be more accurate. What I got was a ready made base smeared with tomato purée, no pizza herbs and what looked and tasted like the torn up fragments of a cheese slice. [read more](#). For those who want to a cocktail after work and sit with friends or alone, The Swan from Herefordshire, County of is a good bar, here they serve a **appetizing brunch** in the morning. Of course, there's also delicious pizza, baked straight from the oven according to traditional recipes, Lovers of the English cuisine are impressed by the extensive selection of traditional menus and enjoy the taste of England.

# *The Swan Menu*



## *Alcoholic Drinks*

BEER

## *Side dishes*

MASHED POTATO

## *Starters & Salads*

POTATOE CHIPS

## *Sauces*

GRAVY

## *Dessert*

SORBET

## *Individual Items*

BISCUIT

## *Drinks*

DRINKS

## *Restaurant Category*

DESSERT

*These types of dishes are  
being served*

PIZZA

TUNA STEAK

## *Ingredients Used*

MEAT

VEGETABLES

VEGETABLES

CHICKEN

RASPBERRY

CAMEMBERT

# *The Swan Menu*



## *The Swan*

Church Street, Herefordshire,  
County of, United Kingdom

### **Opening Hours:**

Sunday 11:00-23:00  
Monday 11:00-23:00  
Tuesday 11:00-23:00  
Wednesday 11:00-23:00  
Thursday 11:00-23:00  
Friday 11:00-23:00  
Saturday 11:00-23:00

Made with [menulist.menu](https://menulist.menu)

 gallery image

