

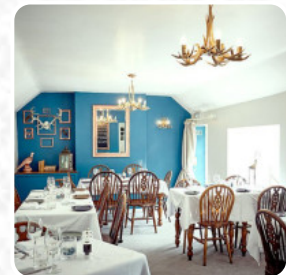


## ***Wheatsheaf Inn Menu***

<https://menulist.menu>

Brand Hill, Charnwood, United Kingdom

+441509890320



A comprehensive menu of Wheatsheaf Inn from Charnwood covering all 17 courses and drinks can be found here on the food list. For seasonal or weekly deals, please get in touch via phone or use the contact details provided on the website. What [StephG560](#) likes about Wheatsheaf Inn:

The Wheatsheaf hosted lunch for 20 people after our wedding ceremony in June 2023 and everything was great from start to finish they put together a wonderful menu for us in the upstairs room (including the Wheatsheaf smokies). All the food was great and the team on the day were amazing. It was a perfect space for the number of people and everyone had a brilliant time. Thank you to Vicky and the team for making it all... [read more](#). The restaurant offers free WLAN for its guests, Depending on the weather, you can also sit outside and be served. The rooms on site are accessible, and therefore no problem for clientele with wheelchairs or physical disabilities.

What [petercV6968AC](#) doesn't like about Wheatsheaf Inn:

The Wheatsheaf Inn is a nice enough pub and looks like a great place to eat lunch when out for the day in the Charnwood area. The service was also quite good. However, the food served to our family was a combination of mediocre and very poor. Our burgers were served rare, even though we were not asked if we wanted them that way. The Katsu chicken burger was ghastly, with chewy and tasteless chicken mixed with a horre... [read more](#). During a meal, a good drink is essential. In this gastropub, you not only get delicious cuisine from the menu but also a comprehensive and particularly good variety of **good beers and other alcoholic beverages** that go well with the food, At the bar, you can relax with a freshly tapped beer or other alcoholic and non-alcoholic drinks.

Moreover, there are numerous **typically British** meals on the menu that are guaranteed to excite every Englishman's taste buds.

# *Wheatsheaf Inn Menu*

## *Sweets & Desserts*

BREAD PUDDING

## *Restaurant Category*

DESSERT

## *Dessert*

APPLE CRUMBLE

CHEESECAKE

*These types of dishes are  
being served*

LAMB

FISH

BREAD

BURGER

ROAST BEEF

DESSERTS

## *Ingredients Used*



TOMATOES

HADDOCK

CHOCOLATE

MINT

CHICKEN

BEEF

CHEESE



# ***Wheatsheaf Inn Menu***



## ***Wheatsheaf Inn***

Brand Hill, Charnwood, United Kingdom

**Opening Hours:**

 gallery image