

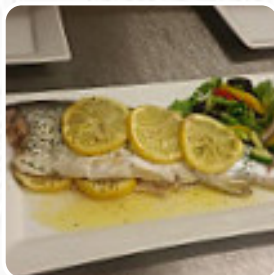


Railway Inn Menu

<https://menuweb.menu>

Lichfield Terrace, Gwynedd, United Kingdom

(+44)1654782279, (+44)1654782744 - <http://www.facebook.com/The-Railway-Inn-Abergynolwyn-212732712106337>



On this website, you can find the **complete [menu](#) of Railway Inn** from Gwynedd. Currently, there are **17** dishes and drinks up for grabs. Nestled in Abergynolwyn, this pub and restaurant has garnered mixed reviews since its recent reopening. While some patrons were disappointed by slow service and unacknowledged bookings, others praise its friendly staff and cozy atmosphere, enhanced by a roaring log fire. Diners commend the generous portion sizes and quality of food, particularly the steak and homemade dishes. The establishment is known for its delightful Sunday lunches and exceptional onion rings, leaving many eager to return. Despite some initial hurdles, the pub's charm and vibrant atmosphere resonate with guests, making it a potential gem for future visits.

Railway Inn Menu



Fish Dishes

FISH & CHIPS

Starters & Salads

POTATO CHIPS

Appetizer

TARTARE

Restaurant Category

BAR

Drinks

DRINKS

BEER

Ingredients Used



PEAS

PORK MEAT

BEEF

These Types Of Dishes Are Being Served



PANINI

LAMB

SALAD

ROAST BEEF

FISH

TUNA STEAK

CHICKEN

BURGER

Railway Inn

Lichfield Terrace, Gwynedd,
United Kingdom

Opening Hours:

Monday 05:30-23:00

Tuesday 12:00-15:00 17:30-00:00

Wednesday 12:00-15:00 17:30-00:00

Thursday 17:30-00:00

Friday 12:00-00:00

Saturday 12:00-00:00

Sunday 12:00-23:00

Made with menuweb.menu

