

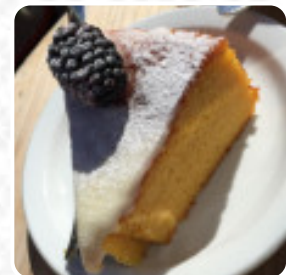
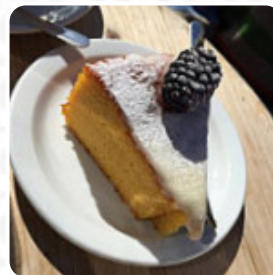
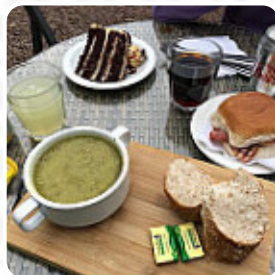


## ***Tynninghame Smithy Menu***

<https://menulist.menu>

Main Street, East Lothian, United Kingdom

+441620860581 - <https://www.facebook.com/TynninghameSmithy/>



A complete [menu](#) of Tynninghame Smithy from East Lothian covering all 14 dishes and drinks can be found here on the food list. For seasonal or weekly deals, please get in touch via phone or use the contact details provided on the website. What [User](#) likes about Tynninghame Smithy:

excellent lunch in a beautiful bienendorf. huge sandwiches with interesting fillings. suppe. great cake and coffee. eat indoors or outdoors and also take them away. friendly service. also dog-friendly. [read more](#). The restaurant is accessible and can therefore also be used with a wheelchair or physical disabilities, Depending on the weather, you can also sit outside and eat and drink. What [User](#) doesn't like about Tynninghame Smithy:

Salad hmmm.....not sure why you would drown a salad with pesto? It was defo OTT in MHO . Husband had Tuna baguette dry bun with no butter, no effort at all there. Got coffee n tea to go as we had a bus to catch, hubby tossed coffee it was so bad and my tea was milky water. Great location though [read more](#). A roundtrip through Great Britain without getting on a plane is easily possible when it comes to culinary delights: Tynninghame Smithy in East Lothian traditionally shines for instance with Fish and Chips, **mashed potatoes** or roast with Yorkshire Pudding and for dessert a fine Trifle, and you can look forward to the fine typical seafood cuisine. As a rule, most courses are prepared in the shortest time for you and served, The guests of the establishment also consider the large variety of differing **coffee and tea specialities** that the establishment offers.

# *Tynninghame Smithy Menu*



## *Fish*

SMOKED SALMON

## *Dessert*

MUFFINS

## *Coffee*

COFFEE

## *Restaurant Category*

GLUTEN FREE

*These types of dishes are  
being served*

SOUP

TOSTADAS

SOPES

SALAD

PANINI

## *Ingredients Used*



CHEESE

AVOCADO

BROCCOLI

CHEDDAR

CHOCOLATE

SAUSAGE

HAM

BACON

# *Tynninghame Smithy Menu*



## *Tynninghame Smithy*

Main Street, East Lothian, United Kingdom

### **Opening Hours:**

Sunday 09:00-17:00  
Monday 09:00-16:30  
Tuesday 09:00-16:30  
Wednesday 09:00-16:30  
Thursday 09:00-16:30  
Friday 09:00-16:30  
Saturday 09:00-17:00

Made with [menulist.menu](https://menulist.menu)

