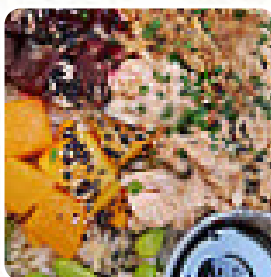




Wasabi Menu

<https://menulist.menu>

56-58 Brompton Rd, City of London, Westminster, United Kingdom
+442075815682 - <https://wasabi.uk.com>



A complete menu of Wasabi from City of London, Westminster covering all **18** dishes and drinks can be found here on the food list. For **changing offers**, please get in touch via phone or use the contact details provided on the website. What [Fidelscastr01](#) likes about Wasabi:

Fast food Japanese/ Korean style. Been visiting Wasabi and its various branches throughout London for about 15 years. The Salmon Teriyaki was wonderful. At Knightsbridge tried a breaded chicken salad with endame beans which was very healthy unlike a lot of oily Chinese food. The hot curries here are great especially the Katsu. A great alternative to McDonald's [read more](#). When the weather is good you can also be served outside, And into the accessible rooms also come clientele with wheelchairs or physiological limitations. What [Rosy_R](#) doesn't like about Wasabi:

We collected a magic bag and we simply asked for utensils and the male staff on duty was VERY RUDE and told us, "If it's too good to go, YOU HAVE TO GO!" He even shoed us away with his hand. It was really embarrassing because it happened in the presence of other customers who heard him raise his voice. For reference, the incident happened 22-April 2023 (Saturday) between 7:50-8:00PM. I can provide the order number o... [read more](#). You can at Wasabi from City of London, Westminster try delicious vegetarian dishes, in which no animal meat or fish was brought into play, on the menu there are also a lot of Asian dishes. As a rule, most menus are prepared in the shortest time for you and served, among the delicacies of this establishment are particularly the Maki and Sashimi.

Wasabi Menu



Salads

CHICKEN SALAD

Sushi Rolls

SUSHI

Pasta

YAKISOBA

Extras

WASABI

Chicken

CHILLI CHICKEN

Dessert

MOCHI

Indian

CHICKEN CURRY

Mexican dishes

CHILLI SAUCE

Japanese specialties

CHICKEN TERIYAKI

Mantel Vegan

TERIYAKI SALMON

Restaurant Category

VEGAN

These types of dishes are being served

SALAD

FISH

NOODLES

Ingredients Used

TOFU

GINGER

BEANS

CHICKEN

Wasabi Menu



Wasabi

56-58 Brompton Rd, City of
London, Westminster, United
Kingdom

Opening Hours:
Monday 10:30-21:00
Tuesday 10:30-21:00
Wednesday 10:30-21:00
Thursday 10:30-21:00
Friday 10:30-21:00
Saturday 10:30-21:00
Sunday 10:30-20:00

Made with menulist.menu

