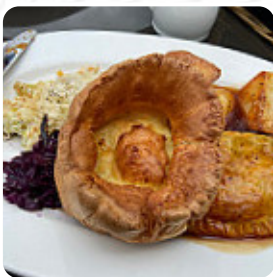




The Wheatsheaf Inn Menu

<https://menulist.menu>

Tbc, NEWCASTLE-UNDER-LYME, United Kingdom
+441782751581 - <http://www.wheatsheafpub.co.uk/>



Here you can find the [menu](#) of **The Wheatsheaf Inn** in NEWCASTLE-UNDER-LYME. At the moment, there are **19** dishes and drinks on the food list. You can inquire about *seasonal or weekly deals* via phone.

The Wheatsheaf Inn Menu



Vegetarian

CAULIFLOWER

Fish Dishes

FISH

Drinks

BEER

Rice

RISOTTO

Burgers

BEEF BURGER

FISCHBURGER

Restaurant Category

MEDITERRANEAN

BAR

These Types Of Dishes Are Being Served

CHICKEN

FISH

BURGER

SALAD

MEAT

Ingredients Used

CHICKEN BREAST

BEEF

SALMON

PORK MEAT

CHEESE

GARLIC

The Wheatsheaf Inn Menu



The Wheatsheaf Inn

Tbc, NEWCASTLE-UNDER-LYME, United Kingdom

Opening Hours:

Monday 10:00 -23:00
Tuesday 10:00 -23:00
Wednesday 10:00 -23:00
Thursday 10:00 -23:00
Friday 10:00 -00:00
Saturday 10:00 -00:00
Sunday 10:00 -10:30

Made with menulist.menu

 gallery image

