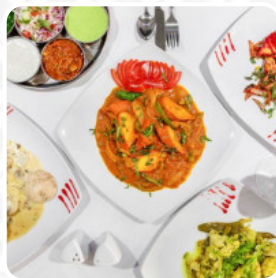
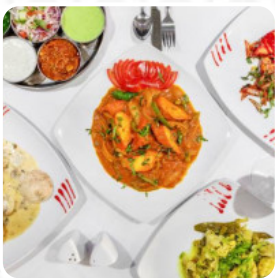




Panache Menu

<https://menulist.menu>

30 Orchard Street, Weston-super-Mare, United Kingdom
+441934635540



The menu of Panache from [Weston-super-Mare](#) includes 111 dishes. On average, dishes or drinks on [the menu](#) cost about £7. The categories can be viewed on the menu below.

Panache Menu

Appetizers

VEGETABLE SAMOSA £4

10 Most Popular

TIKKA BIRYANI £13

Mains

ACHARI £9

Lamb

ROGAN JOSH £9

Vegetarian Dishes

SAG PANEER £5

Vegetarian Specialties

BOMBAY ALOO £5

Dessert

COCONUT RICE £4

Chicken

SAAGWALA £9

Lamm & Hähnchen

DHANSAK £9

International Dishes

MASALA £9

Vegetarian Specialities

TARKA DHALL £5

Afghanische Grillspezialitäten

SHAMMI KEBAB £5

Calzone

SAMBA £9

Main Dish

SAG ALOO PANEER £5

Indische Gerichte Mit Hähnchen

BHUNA £9

Fladenbrot Und Beilagen

CHILLI NAN £3

Bread

KEEMA CHEESE NAN £4

Popular Dishes

KORAI £9

Breads & Rice

PESHWARI NAAN £3

Chinese Rice

SPECIAL EGG RICE £4

Accompaniment

SHOBI BHAJI £5



Panache Menu

Tandoori Bread

GARLIC AND CHEESE NAAN £4

Signature Dishes

SIGNATURE £10

Prawn Dishes

PATHIA £9

Tandoor Chicken

HALF TANDOOR CHICKEN £13

Traditional Curries

BALTI £9

Vegetarian Curry Dishes

SAG ALOO £5

Biriyani Dishes

KING PRAWN BIRIYANI £14

Titash Specialities

SATKORA £9

Indian vegetarian dishes

CHANA ALOO £5

South Asia Premium Beer

KING FISHER 650ML £6

Vegetable Side Dishes And Salad

BRINGAL BHAJI £5

Entrees (Comes With White Basmati Rice)

MADRAS £9

Beverages, Chips, Cookies

CHIPS £3

Grilled Specialties from the Tandoor

LAMB TIKKA £6

Indian Food - Vegetarian

VEGETABLE RICE £4

Indian Rice

MUSHROOM RICE £4

GARLIC RICE £4

Sundries

PLAIN PAPADUM £1

ONION CUCUMBER RAITHA £2

Picked For You

SHAHSLICK MASALA £13

PILAU RICE £3

Vegetarian Choice Evolved

MUSHROOM BHAJI £5



Panache Menu



CAULIFLOWER BHAJI £5

Rice

KEEMA RICE £4

PINEAPPLE RICE £4

SAG RICE £4

Starters

PRAWN PATHIA POORI £5

Prawn Starter LAMB SAMOSA £4

SHEEK KEBAB £5

Biryani

PANACHE MIX BIRIYANI £14

SEASONAL SHOBI BIRIYANI £11

BENGALI SEAFOOD BIRIYANI £14

Soft Drinks

COKE 330ML CAN £2

SPRITE 330ML CAN £2

FANTA 330ML CAN £2

DIET COKE 330ML CAN £2

Side Dishes

CHANA SAG £5

BINDI BHAJI £5

STEAMED RICE £3

CHUTNEY TRAY £5

SPICY PAPADUM £1

Appetisers

PANACHE GRILL £7

JHINGRA CHAAT POORI £6

GARLIC MUSHROOM POORI £5

PANACHE CHOP £6

CHANA CHAAT POORI £5

MURGHI CHAAT POORI £6

Rice And Bread

PANACHE SPECIAL RICE £4

COCONUT CHILI RICE £4

PINEAPPLE CHILI RICE £4

FRIED POORI £3

CHAPPATI £3

GARLIC CHEESE CHILLI NAAN £4

Old Fashion

GARLIC MIRCH £11

NAG £9

KULAPURI £9

ROSHANI £9

CHARUKA £9

SHIZANIA £9

Tandoori

PANACHE HOUSE GRILL £15

CHICKEN SHAHSLICK £13

GARLIC AND LEMON KING PRAWN £15

LAMB SHAHSLICK £13

PANEER SHAHSLICK £10

VEGETABLE SHAHSLICK £9

PANACHE CHOP SHAHSLICK £14

Panache Menu



Panache Signatures

PESHWARI PASANDA	£10
AKBARI JAFRAN	£10
GUJURATI ZURRI	£12
MAHARAJA DAVAAT	£14
NAWAABI	£10
MURGHI KARAHİ MASALA	£13
DESI TAWA	£10

KEEMA NAAN

£4

Indian



ONION BHAJI	£4
CHICKEN TIKKA	£6
CHILLI PANEER	£5
KORMA	£9
JALFREZI	£9
VINDALOO	£9
BUTTER CHICKEN	£12
BIRYANI	£12
ALOO GOBI	£5
CHANA MASALA	£5
JEERA RICE	£4
PARATHA	£3
CHEESE NAAN	£3
GARLIC NAAN	£3
TANDOORI ROTI	£3
BUTTER NAAN	£3

Panache Menu



Panache

30 Orchard Street, Weston-
super-Mare, United Kingdom

Opening Hours:

Sunday 17:00-22:15
Tuesday 17:00-22:15
Wednesday 17:00-22:15
Thursday 17:00-22:15
Friday 17:00-22:15
Saturday 17:00-22:15

Made with menulist.menu

 gallery image

