

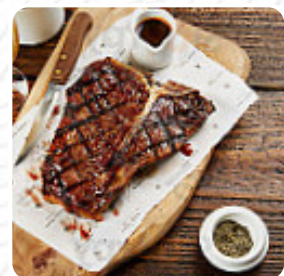
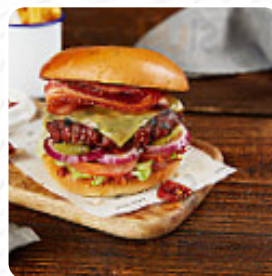


## ***Cast Iron Grill Menu***

<https://menulist.menu>

Swansea Marriott Hotel, United Kingdom

+441792634835 - [https://www.marriott.com/hotels/hotel-information/restaurant/swsdt-swanssea-marriott-hotel/?scid=45f93f1b-bd77-45c9-8dab-83b6a417f6fe&y\\_source=1\\_NDE0MzU1Ni03NjktbG9jYXRpb24ud2Vic2l0ZQ%3D%3D](https://www.marriott.com/hotels/hotel-information/restaurant/swsdt-swanssea-marriott-hotel/?scid=45f93f1b-bd77-45c9-8dab-83b6a417f6fe&y_source=1_NDE0MzU1Ni03NjktbG9jYXRpb24ud2Vic2l0ZQ%3D%3D)



The menu of **Cast Iron Grill** from Swansea includes **23** menus. On average, *menus or drinks* on [the menu](#) cost about £7. The categories can be viewed on the menu below.

# Cast Iron Grill Menu



## Appetizers

SQUID

## Burgers

FISCHBURGER

## Sandwiches

CHICKEN BURGER

## Drinks

BOTTLE OF WATER £4

## Beef

RUMP

## Wine

MERLOT

## Egg Dishes

OMELETTE

## Coffee

COFFEE £3

## Restaurant Category

FRENCH

*These Types Of Dishes Are Being Served*

TUNA STEAK

TOSTADAS

## Dessert

CAST IRON SUNDAE, CREATE YOUR OWN SUNDAE WITH JUDES ICE CREAM, TOPPINGS AND SAUCES £5

CAST IRON DOUBLE CHOCOLATE BROWNIE, HONEYCOMB, HOT CHOCOLATE SAUCE, JUDES RUBIES BANANA ICE CREAM £6

LEMON AND STEM GINGER SYLLABUB, GINGER SNAPS £5

## Starters

CRISPY SQUID AND CHORIZO, LEMON MAYONNAISE £6

HERITAGE TOMATO, WHIPPED ROSARY GOATS CHEESE, PICKLED SHALLOTS £7

CARAMELISED SCALLOPS, CAULIFLOWER, QUINOA, BASIL PESTO £10

## Main Course

PAPPARDELLE PASTA, MUSHROOMS, SPINACH, POACHED EGG £9

RACK OF PORK, CRACKLING, WATERCRESS, CHIPS £14

CAST IRON BURGER, BEEF PATTY, CRISPY BACON, CHEDDAR, SMOKY CHIPOTLE SAUCE, FRIES £12

## Ingredients Used



PEAS

CHEESE

MUSTARD

# *Cast Iron Grill Menu*



## *Cast Iron Grill*

Swansea Marriott Hotel, United Kingdom

### **Opening Hours:**

Sunday 07:00-22:00  
Monday 06:30-22:00  
Tuesday 06:30-22:00  
Wednesday 06:30-22:00  
Thursday 06:30-22:00  
Friday 06:30-22:00  
Saturday 07:00-22:00

Made with [menulist.menu](https://menulist.menu)

 gallery image

