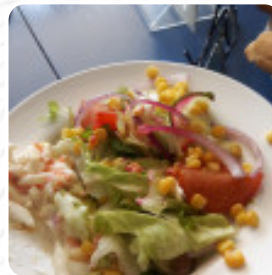
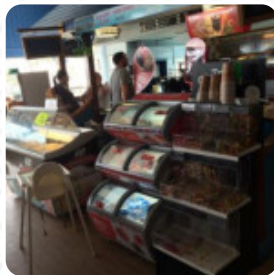
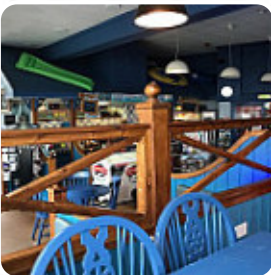




## ***The Boardwalk Cafe Menu***

<https://menulist.menu>

Sandown Pier, Esplanade, Isle Of Wight, United Kingdom, Isle of Wight  
**+441983405556,+441983403219 - <http://www.sandownpier.co.uk/>**



On this homepage, you can find the *complete* [menu](#) of *The Boardwalk Cafe* from Isle of Wight. Currently, there are **8** dishes and drinks available. For **seasonal or weekly deals**, please contact the restaurant owner directly. You can also contact them through their website.

# *The Boardwalk Cafe Menu*



## *Drinks*

BEER

## *Sauces*

KETCHUP

## *Indian*

ROTI

## *Hot Drink*

HOT CHOCOLATE

## *Restaurant Category*

VEGETARIAN

## *Ingredients Used*

CHOCOLATE

## *Hot Drinks*

COFFEE

TEA

## *Coffee*



CAPPUCCINO

ESPRESSO

DOUBLE ESPRESSO

## *These Types Of Dishes Are Being Served*



TUNA STEAK

FISH

PIZZA

ICE CREAM

# *The Boardwalk Cafe Menu*



## *The Boardwalk Cafe*

Sandown Pier, Esplanade, Isle Of  
Wight, United Kingdom, Isle of  
Wight

**Opening Hours:**

 gallery image

