

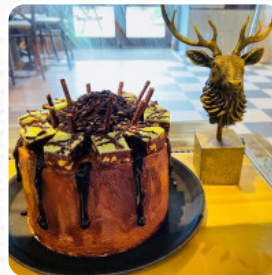


## ***Copper Penny Menu***

<https://menulist.menu>

Christchurch Road, Neath Port Talbot, United Kingdom

+441639820146 - <https://www.margamdeercarveryporttalbot.co.uk>



A comprehensive [menu](#) of Copper Penny from Neath Port Talbot covering all 11 courses and drinks can be found here on the card. For **changing offers**, please get in touch via phone or use the contact details provided on the website.

# *Copper Penny Menu*



## *From The Grill*

MIXED GRILL

## *Indian*

ROTI

## *Restaurant Category*

VEGETARIAN

## *Mixed Specialties*

KEBAB

## *Drinks*

DRINKS

BEER

## *Ingredients Used*

ONION

POTATOES

CHEESE

VEGETABLES

PEAS

## *These Types Of Dishes Are Being Served*

MEAT

TURKEY

CHICKEN

FISH

TUNA STEAK

# *Copper Penny Menu*



## *Copper Penny*

Christchurch Road, Neath Port  
Talbot, United Kingdom

### **Opening Hours:**

Sunday 11:00-23:00  
Monday 11:00-23:00  
Tuesday 11:00-23:00  
Wednesday 11:00-23:00  
Thursday 11:00-23:00  
Friday 11:00-23:00  
Saturday 11:00-23:00

Made with [menulist.menu](https://menulist.menu)

