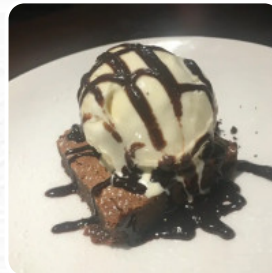




The Stationhouse Menu

<https://menulist.menu>

Lower Street Haslemere, Surrey GU27 2PD, Waverley, United Kingdom
+441428776560 - <http://www.tbc.co.uk/>



Here you can find the [menu](#) of **The Stationhouse** in Waverley. At the moment, there are **16** courses and drinks on the card. You can inquire about *seasonal* or *weekly deals* via phone. In addition to our delectable food options, we offer a variety of drink choices. Whether you prefer our centrally located double-sided main bar, the first-floor café and bar for a more relaxed atmosphere, or even our open-air terrace in the new glass extension - there's plenty of options to quench your thirst.

The Stationhouse Menu



Alcoholic Drinks

PROSECCO

Drinks

DRINKS

Starters & Salads

POTATO CHIPS

Cocktails

BLOODY MARY

Fish Dishes

FISH AND CHIPS

FISH CHIPS

From The Grill

RIBS

SPARE RIBS

Restaurant Category

STEAKHOUSE

BAR

Ingredients Used

PEAS

POTATOES

MILK

These Types Of Dishes Are Being Served

PIZZA

TUNA STEAK

FISH

The Stationhouse Menu



The Stationhouse

Lower Street Haslemere, Surrey
GU27 2PD, Waverley, United
Kingdom

Opening Hours:

Monday 12:00-15:00
Tuesday 12:00-15:00
Wednesday 12:00-15:00
Thursday 12:00-15:00
Friday 12:00-22:00
Saturday 12:00-22:00
Sunday 12:00-18:00

Made with menulist.menu

 gallery image

