

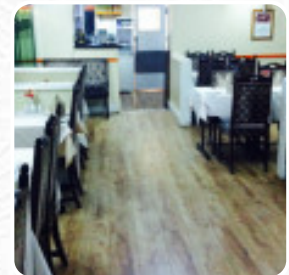
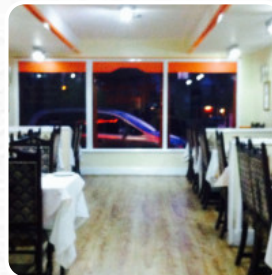
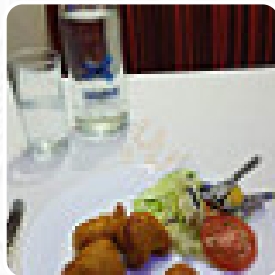


New Indya Menu

<https://menulist.menu>

4 Rochford Road, Southend -on-sea, Southend-on-Sea, United Kingdom

+441702334402 - <https://newindya.net/>



A comprehensive [menu](#) of New Indya from Southend-on-Sea covering all 7 menus and drinks can be found here on the card. For **seasonal or weekly deals**, please get in touch via phone or use the contact details provided on the website.

New Indya Menu



Seafood

PRAWN

Side Dishes

RICE

Drinks

BEER

Dessert

SORBET

Mexican Dishes

CHILLI SAUCE

Ingredients Used

CHEESE

KING PRAWN

These Types Of Dishes Are Being Served

CHICKEN

MEAT

LAMB

Indian

CHICKEN CURRY

CHICKEN TIKKA

NAAN

KEEMA NAAN

LAMB CURRY

PANEER TIKKA

New Indya Menu



New Indya

4 Rochford Road, Southend -on-sea, Southend-on-Sea, United Kingdom

Opening Hours:

Sunday 05:00-11:00
Monday 05:00-11:00
Tuesday 05:00-11:00
Wednesday 05:00-11:00
Thursday 05:00-11:00
Friday 05:00-11:00
Saturday 05:00-11:00

Made with menulist.menu

 gallery image

