

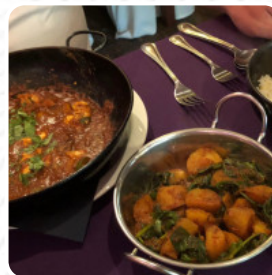


The Journeyman Cookery School Menu

<https://menulist.menu>

Mellingey Mill, Cornwall, Isles of Scilly, United Kingdom

(+44)1841540604 - <http://www.journeymanrestaurant.co.uk>



Here you can find the [menu](#) of **The Journeyman Cookery School** in Cornwall, Isles of Scilly. At the moment, there are 20 menus and drinks on the food list. You can inquire about **seasonal or weekly deals** via phone. The Journeyman is a highly acclaimed restaurant located in the charming hamlet of Mellingey, just a short drive from Padstow and Wadebridge. Situated on the historic Saint's Way, our restaurant offers a relaxed atmosphere in a beautiful mill dining room. Enjoy a wide selection of over 40 dishes from around the world, making it the perfect choice for a special night out, a family occasion, or a casual evening with friends.

The Journeyman Cookery School Menu



Non Alcoholic Drinks

TONIC

Thai

RED CURRY

Seafood

PRAWN

Lamb

ROGAN JOSH

Soft Drinks

COKE

Popular Dishes

PILAU RICE

Restaurant Category

DESSERT

Dessert

COCONUT RICE

CHEESECAKE

Ingredients Used

GINGER

ONION

COCONUT

These Types Of Dishes Are Being Served

LAMB

CHICKEN

MEAT

Indian

LAMB CURRY

CHICKEN CURRY

KORMA

NAAN

CHICKEN TIKKA

The Journeyman Cookery School Menu



The Journeyman Cookery School

Mellingey Mill, Cornwall, Isles of Scilly, United Kingdom

Opening Hours:

Monday 18:00-22:00

Tuesday 18:00-22:00

Wednesday 18:00-22:00

Thursday 18:00-22:00

Friday 18:00-22:00

Saturday 18:00-22:00

Made with menulist.menu

 gallery image

