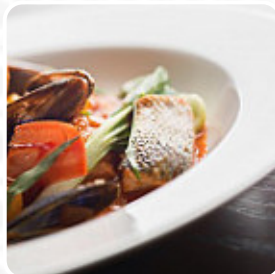




Alderley Menu

<https://menulist.menu>

The Alderley Edge Hotel, Cheshire East, United Kingdom
+441625583033 - <http://www.alderleyedgehotel.com/>



A **comprehensive [menu](#) of Alderley** from Cheshire East covering all **20** dishes and drinks can be found here on the card. For *changing offers*, please get in touch via phone or use the contact details provided on the website.

The Alderley is a charming split-level conservatory nestled on wooded slopes with panoramic views of the picturesque Cheshire countryside. The warm and inviting ambiance of the sandstone country house extends to this dining spot, with friendly front-of-house staff ensuring a comfortable experience. The menu features exceptionally good, locally sourced dishes, such as rump of Cheshire lamb served with slow-cooked tomatoes, baby roasted potatoes, and garden mint for £23.15. Indulge in desserts like the 'Treachletown' pudding with butterscotch ice cream and toffee sauce for £6.50. For a satisfying lunch, try the seared liver and bacon with herb mash and redcurrant jus from the table d'hote menu for £13.95. Meals can be adjusted to suit your preferences.

Alderley Menu



Non Alcoholic Drinks

TONIC

Salad

CAESAR

Drinks

DRINKS

Sauces

MAYONNAISE

Dessert

BROWNIES

Hot Drinks

COFFEE

TEA

Salads

HALLOUMI SALAD

CHICKEN CAESAR

CHICKEN CAESAR SALAD

CAESAR SALAD

These Types Of Dishes Are Being Served

FISH

CHICKEN

TUNA STEAK

SALAD

Ingredients Used

CHOCOLATE

EGG

TUNA

HAM

CUCUMBER

Alderley Menu



Alderley

The Alderley Edge Hotel,
Cheshire East, United Kingdom

Made with menulist.menu

Opening Hours:

Sunday 12:00-14:00 19:00-21:00
Monday 12:00-14:00 19:00-21:00
Tuesday 12:00-16:00
Wednesday 12:00-14:00 19:00-21:00
Thursday 12:00-14:00 19:00-21:00
Friday 12:00-14:00 19:00-21:00
Saturday 12:00-14:00 19:00-21:00

 gallery image

